

## 6550F09

### 9GHz 50Ω N Type Mechanical Calibration Kit

#### Overview

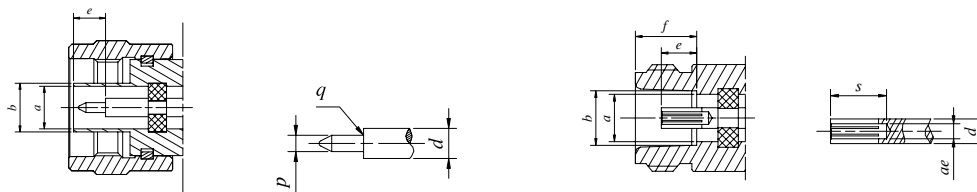
The 6550F09 calibration kits are used to calibrate network analyzers for measurements of components with N type connectors. This calibration kit is an alternative to Agilent 85032F. The Frequency Range is DC~9GHz.

#### Devices

Device	PN	Qty	Configuration
	6550F09		
Open(male)	6550F09KM	1	●
Open(female)	6550F09KF	1	●
Short(male)	6550F09DM	1	●
Short(female)	6550F09DF	1	●
Load(male)	6550F09LM	1	●
Load(female)	6550F09LF	1	●
Adapter(male to male)	6550A1801	1	○
Adapter(female to female)	6550A1802	1	○
Adapter(male to female)	6550A1803	1	○
Torque Wrench	B19T135	1	○
Box	HW01CA	1	●

●basic configuration    ○options

#### Interface Dimensions



	mm		inchs	
	Min.	Max.	Min.	Max.
a	6.99	7.01	0.2751	0.2761
b	7.98	8.04	0.3140	0.3165
d	3.04		0.120	
e	5.26	5.30	0.2070	0.2086
p	1.638	1.664	0.0645	0.0655
q	—	0.076	—	0.003

	mm		inchs	
	Min.	Max.	Min.	Max.
a	6.99	7.01	0.2751	0.2761
b	8.05	8.1	0.317	0.319
d	3.04		0.120	
e	5.22	5.26	0.2055	0.2070
f	9.07	9.17	0.357	0.361
s	7	—	0.2755	—
ae	1.80	1.91	0.071	0.075

## Electrical Specifications

- ◇ Impedance : 50Ω
- ◇ Average Power : ≤1W
- ◇ Electrical Specifications :

Device	6550F09	
	Frequency	Specifications
loads	DC~9GHz	Return Loss -36dB VSWR 1.032
opens	DC~9GHz	Deviation from Nominal Phase±0.8°
shorts	DC~9GHz	Deviation from Nominal Phase±0.8°
adapters	DC~9GHz (operating up to 18GHz) , Return loss: -32dB, VSWR: -1.05, Insertion loss: 0.1dB	

\*The above specifications are relative to Agilent 85032F

## Materials

Center conductor : beryllium bronze

Body : stainless steel

Connector nut : stainless steel

## Standard

IEC 60169-16 Grade 0

## Mechanical Characteristic

Connect/disconnect life : >500 times

Maximum insertion force : 8.9N

Coupling torque : 1.35 Nm

Open-end wrench size : 19mm

## Environmental Requirements

Parameter	Limits
Operating Temperature	+20°C~ +26°C (suggested)
Storage Temperature	-40°C~ +75°C

